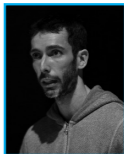


PLAN B FOR UTOPIA

Joan Clevillé Dance

Company Contact: Joan Clevillé
joan@joanclevilledance.com
+44 (0)7807 498 529



Stage area dimensions: 8m x 8m

Lighting requirements: The company tours a ETC NOMAD and all floor lighting units. We require all overhead units to be provided by the venue.

Sound requirements: The company requires a PA and monitors in 4 corners of the stage. We tour a Mac mini with Qlab for playback.

Video requirements: N/A

Number in touring company: 4 (Artistic Director, 2 x Dancers, 1 x Production Manager).

Touring availability: Autumn 2017 – Spring 2019.

Any additional touring info: The company can do up to 5 performances per week and up to two performances a day. Requires a white dance floor, hand held smoke machine, 2 white fold up chairs, a birthday balloon filled with helium and a shop bought birthday cake to be provided for international dates. Freight: excess baggage (3 extra suitcases). Day before get in preferred, same day get in possible.