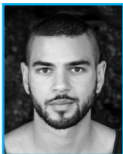


# THE CHOSEN HARAM

**Sadiq Ali**

**Company Contact:** Sadiq Ali  
producer@sadiqsadiq.com  
+44 (0)7817 401 866



**Stage area dimensions:** Min; 4m x 5m.

5m height clearance.

**Lighting requirements:** LX plan can be supplied.

The lighting plan can be adapted venue depending. There are a number of specials to light the poles from the top and the sides as well as sunstrips across the back of the stage.

Not shown in the LX plan is the back projector placed on the floor upstage centre.

**Sound requirements:** PA system.

**Video requirements:** Back projector with DMX Shutter.

**Number in touring company:** 4.

**Touring availability:** 23 January 2022 onwards.

**Any additional touring info:** (please also include details of access information here) Rigging requirements for 2x Chinese Poles.

These require 4x floor or wall points at each corner of the stage or alternatively ballast or stage weights to create anchor point.

GET IN: Get in and fit up required time: 6-8 hours minimum prior to 1st show